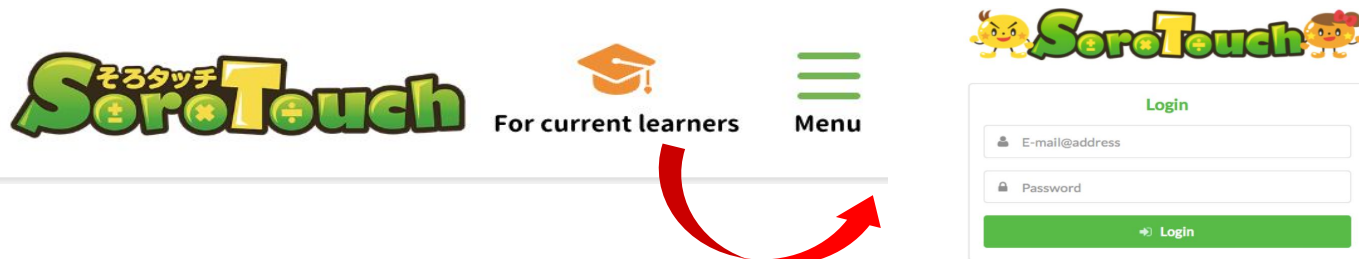


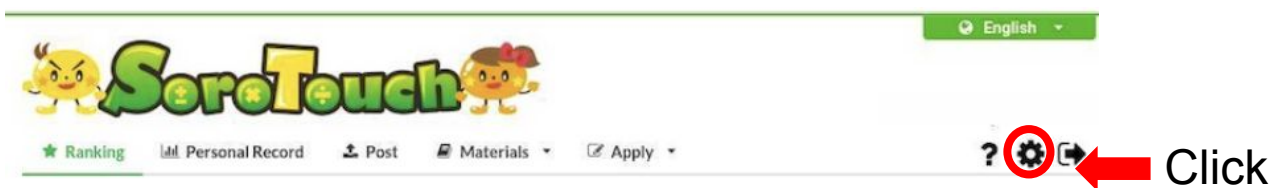
Procedures for Continuing to Use SoroTouch

If you want to continue using SoroTouch even after leaving the Center, please follow the steps below.

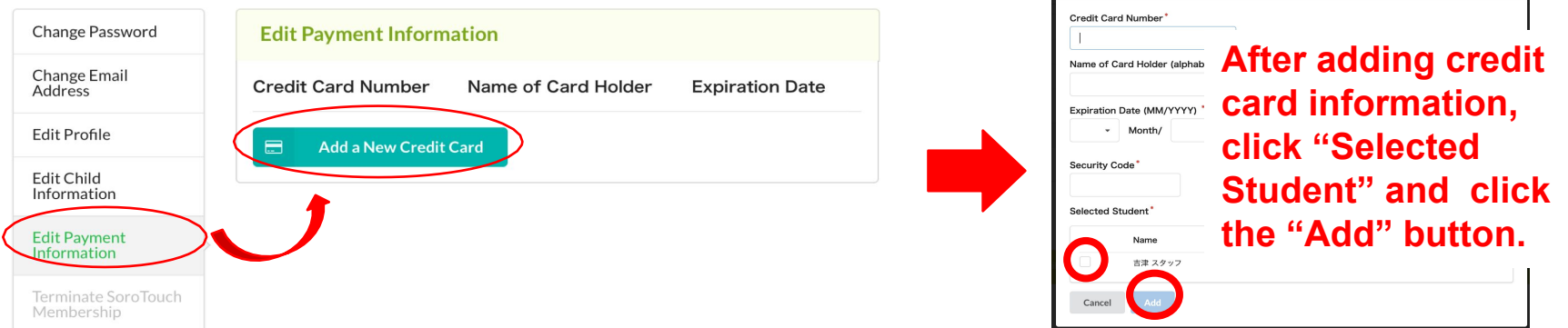
1. Go to <https://www.sorotouch.jp/en/> and log in to 'My Page' from 'For current learners' in the top right corner of the screen.



2. Click the gear icon in the top right corner of the screen and open "Account Settings."

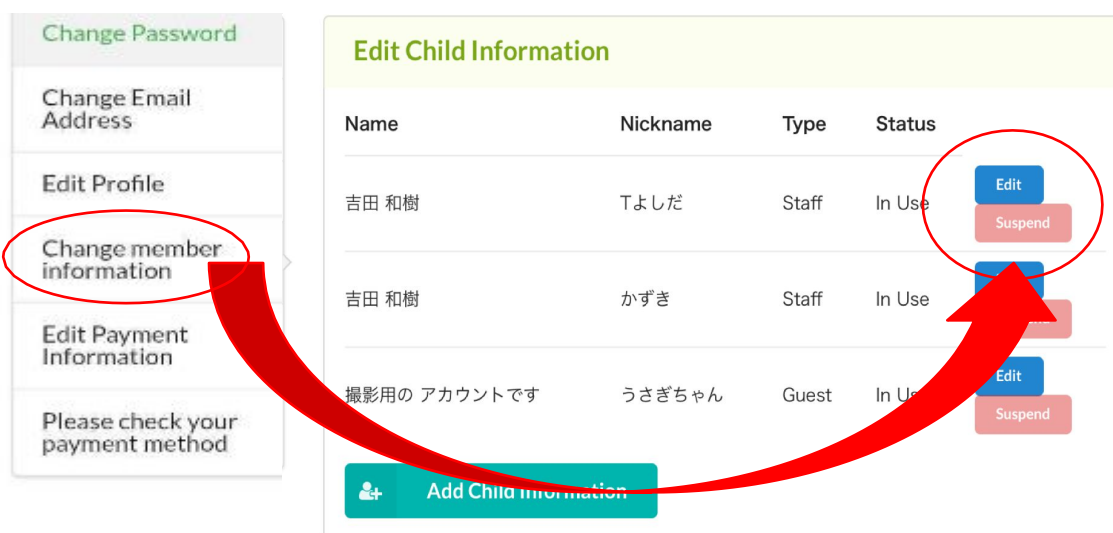


3. Edit Payment Information → Add a New Credit Card and Select the target student



If the above steps are completed before withdrawal, resuming process will be smoother.

4. The following month after withdrawing from the Center, log in to "MyPage" → "Account Setting" → "Change member Information" → Click on "Resume"



The monthly usage fee will be charged on the 1st of each month. Please note that charges will continue unless a valid card is not registered or a service suspension request is submitted.

Service suspension or withdrawal procedures must be completed by the parents. Please log in from <https://www.sorotouch.com/app/sign-in> and proceed from the account settings.